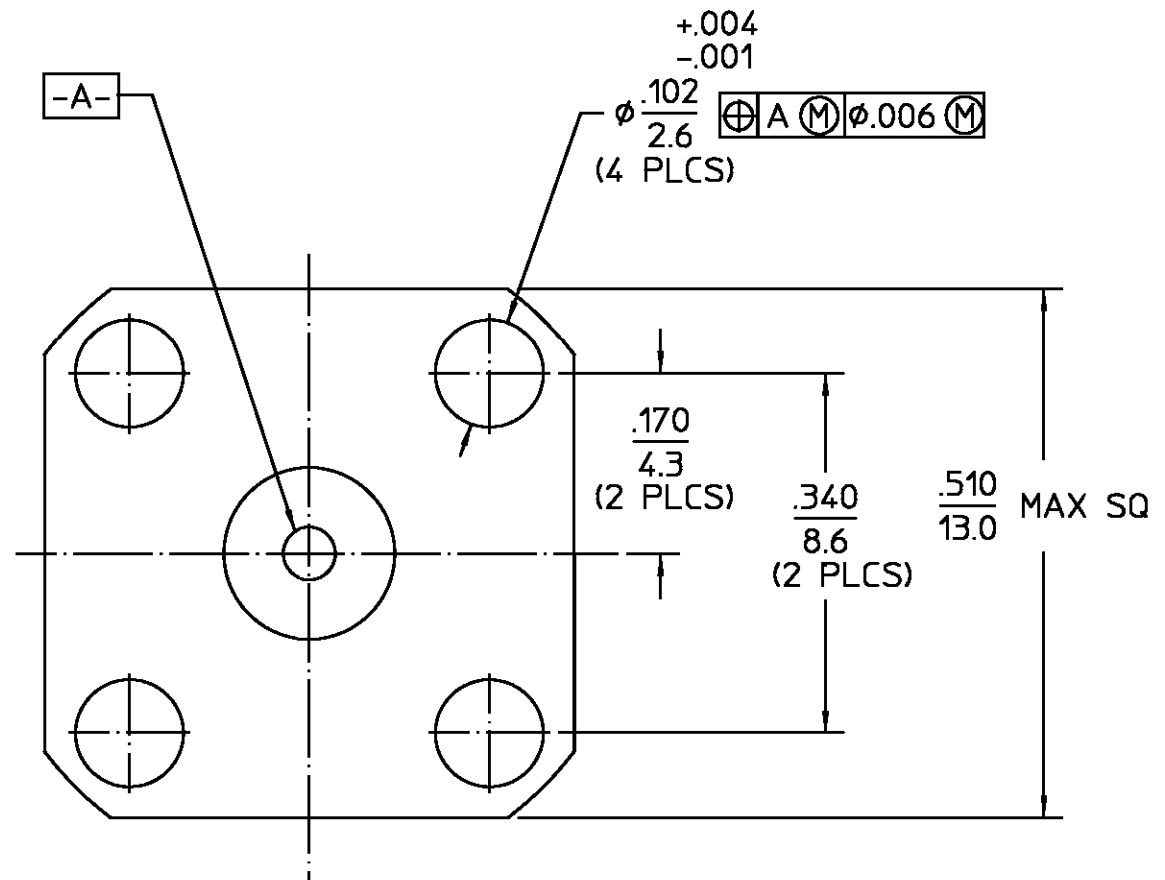
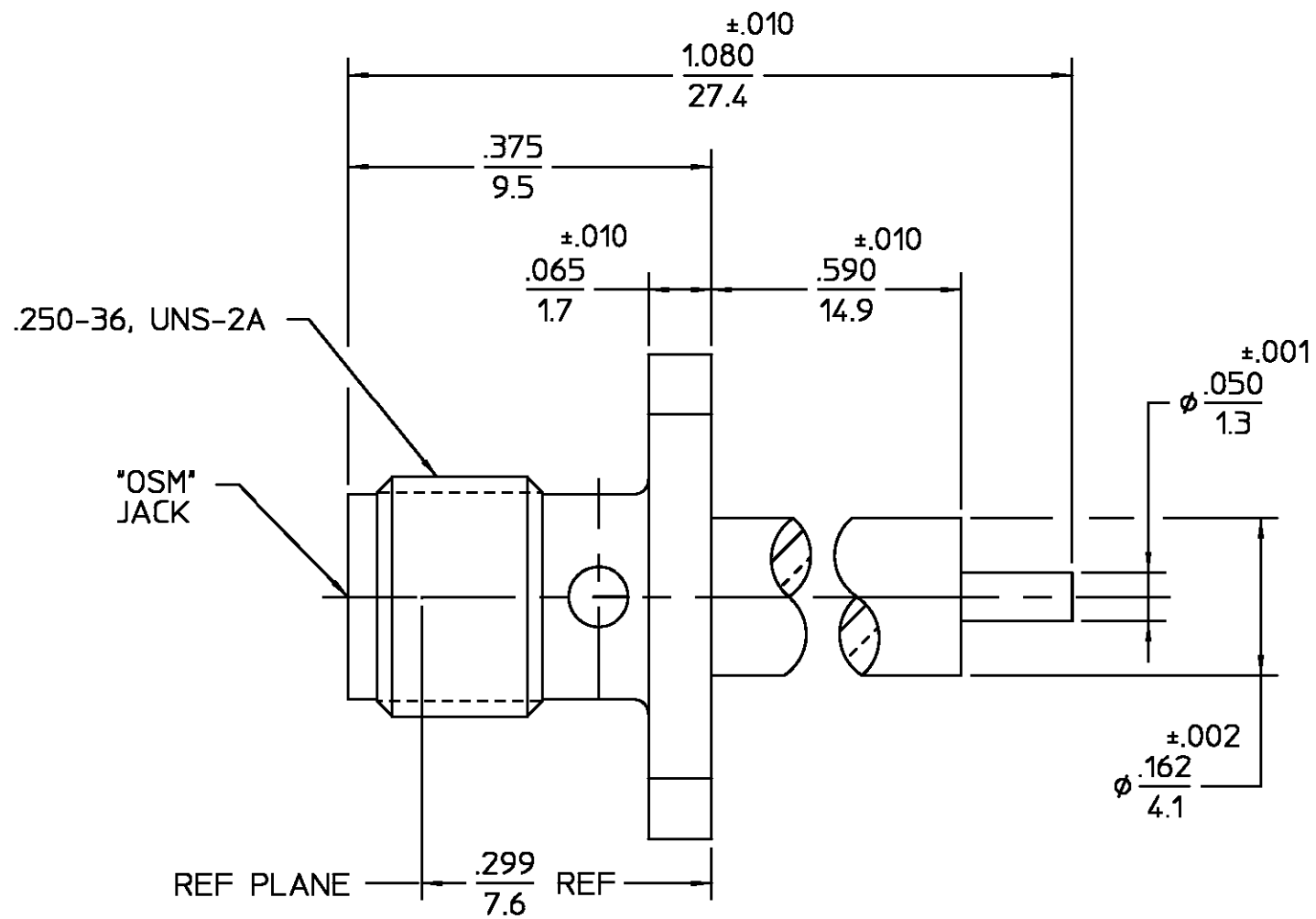


REVISIONS			
REV	DESCRIPTION	DATE	APPROVED
01 <sub>1</sub>	REVISED	K.LE 11-20-96	<i>RAC</i>



.XXX = in  
XX.X = mm (REF)

HOUSING	STAINLESS STEEL PER ASTM-A484 AND ASTM-A582, TYPE 303	GOLD PLATE PER MIL-G-45204	UNLESS OTHERWISE SPECIFIED DIMENSIONS ARE IN INCHES FRAC. DEC. ANGLES $\pm 1/64$ $\pm .005$ $\pm 1^\circ$	DRAWN BY M.C. DATE 6-2-88	AMP Incorporated 140 Fourth Avenue Waltham, MA 02451-7599
DIELECTRIC	TFE FLUOROCARBON PER ASTM-D-1457	N/A		CHECKED BY JM DATE 6-30-88	
CENTER CONTACT	BERYLLIUM COPPER PER ASTM-B-196 OR ASTM-B-197, ALLOY C17300, CONDITION H	GOLD PLATE PER MIL-G-45204	These drawings and specifications are the property of M/A COM Interconnect Div. and shall not be reproduced or copied or used in whole or in part as the basis for the manufacture or sale of item(s) without written permission.	APPD BY FZ DATE 8-15-88	TITLE 'OSM' STRAIGHT 4 HOLE FLG MOUNT JACK RECEPTACLE
COMPONENT	MATERIAL	FINISH		USE ASSY PROCEDURE NO. AP. N/A	
				SCALE 6:1	SHEET 1 OF 1

CUSTOMER DRAWING

AMP PART # 1052957-1  
SHEET 1 OF 1 REV A